

**Dagangan** : NON ALLOY STEEL WELDED PIPE,  
OF CIRCULAR CROSS SECTION

Nama Perdagangan : Non Alloy Steel Welded Pipe,  
Of Circular Cross Section,  
Grade Q195

**Kod Tarif (Perintah Duti Kastam 2012) :**

7306.30.91 00 (PDK 2017)

**Tarikh Kelulusan** : 20 Jun 2017

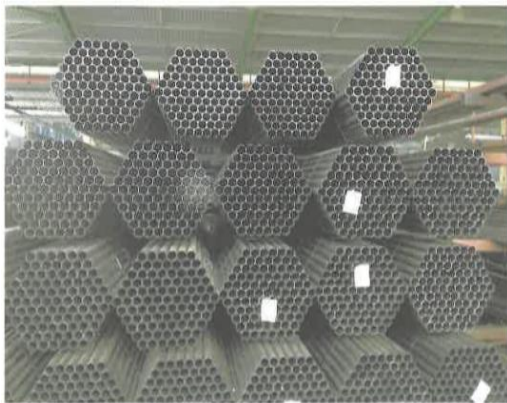
**Keterangan barangan :**

Barangan yang di namakan sebagai *welded steel pipe* merupakan paip besi berbentuk bulat dengan ukuran diameter luaran (*outer diameter*) 3.8 cm, ketebalan (*thickness*) 0.1 cm dan purata ukuran panjang 9.8 cm.

Berdasarkan permohonan daripada pihak syarikat, barangan diimport untuk menghasilkan barangan siap iaitu khemah dan payung.

Barangan adalah seperti gambar di bawah :-

Size 32mm x 0.70 mm x 6m



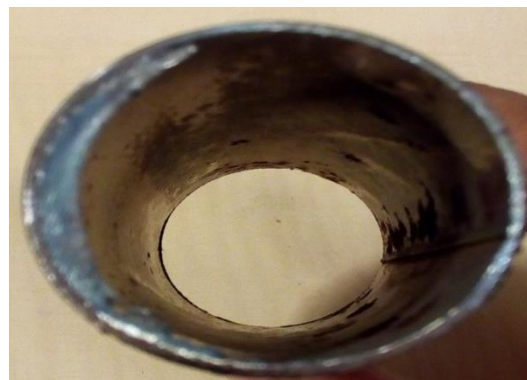
Size 38mm x 0.70 mm x 6m



Sampel yang dikemukakan



Sampel yang dikemukakan



Melalui gambar sampel yang dikemukakan, terdapat garisan seperti kesan pateri (*welded*) pada bahagian dalam *pipe*.

Berdasarkan *mill cert* yang disertakan, barangan adalah daripada china dan dinamakan sebagai *furniture pipe*. *Grade* yang digunakan adalah Q195. *Grade* Q195 adalah merupakan *structure steel*.

Berdasarkan sampel, barangan merupakan *welded steel pipes*.

Laporan analisis pakar mengesahkan sampel berupa satu bungkusan plastik yang mengandungi satu paip logam berbentuk silinder dengan purata ukuran panjang 9.8 cm, diameter luar 3.8 cm dan tebal 0.1 cm. Setelah dianalisis, sampel didapati terdiri daripada 99.5 % besi dan 0.4 % mangan iaitu sesuai dengan *non-alloy steel*.

Berdasarkan *mill test certificate* yang dikemukakan, maklumat spesifikasi barangan adalah seperti berikut :-

Reference No: SGE160601

Product name	130 MT Of Furniture Pipe	
Quality Grade	Q195 – Structure steel	
Size/Dimension	Outer Diameter (O.D) – 32 mm, 38 mm Thickness (mm) – 0.7 mm Length – 6 m	
Chemical composition	Carbon (C)	0.10%, 0.11%
	Manganese (Mn)	0.45%, 0.48%
	Silicon (Si)	0.28%, 0.30%
	Phosphorus (P)	0.027%, 0.028%
	Sulphur (S)	0.021%, 0.024%

Berdasarkan *mill certificate* yang dikemukakan, *internal diameter* barangan adalah 31.3 mm dan 37.3 mm.

Ketua Pengarah Kastam Malaysia memutuskan barangan tersebut sesuai diperjeniskan di bawah kod tarif **7306.30.91 00** sebagai ***Welded pipe, of circular cross-section, of non-alloy steel, with an internal diameter of 12.5 mm or more, an external diameter less than 140 mm and containing by weight less than 0.45 % of carbon.***

Barangan memenuhi definisi sebagai *pipes* di mana barangan mempunyai ruangan kosong/berongga dan mempunyai *cross section* yang sama luar dan dalam di sepanjang *pipe*. Keterangan ini adalah sesuai sebagaimana keterangan *General Notes to Chapter 73* di dalam EN HS 2012 muka surat XX-73-1 iaitu:-

#### **GENERAL**

*This Chapter covers a certain number of specific articles in headings 73.01 to 73.24, and in headings 73.25 and 73.26 a group of articles or included in Chapter 82 or 83 and not falling in other Chapters of the Nomenclature, of iron (including cast iron as defined in Note 1 to this Chapter) or steel.*

For the purposes of this Chapter, the expressions tubes and pipes and hollow profiles have the following meanings hereby assigned to them:

**(1) Tubes and pipes**

Concentric hollow products, of uniform cross-section with only one enclosed void along their whole length, having their inner and outer surfaces of the same form. Steel tubes are mainly of circular, oval, rectangular (including square) cross-sections but in addition may include equilateral triangular and other regular convex polygonal cross-sections. Products of cross-section other than circular, with rounded corners along their whole length, and tubes with upset ends, are also to be considered as tubes. They may be polished, coated, bent (including coiled tubing), threaded and coupled or not, drilled, waisted, expanded, cone shaped or fitted with flanges, collar or rings.

Kandungan elemen *carbon* yang terkandung di dalam barangan adalah 0.10% dan 0.11% sebagaimana di dalam *mill certificate*. Oleh itu, barangan memenuhi definisi *steel* sebagaimana berdasarkan *Chapter Notes 1(d) Chapter 72* di dalam Perintah Duti Kastam 2017 iaitu :-

**(d) Steel**

*Ferrous materials other than those of heading 72.03 which (with the exception of certain types produced in the form of castings) are usefully malleable and which contain by weight 2% or less of carbon. However, chromium steels may contain higher proportions of carbon.*

Berdasarkan *mill certificate*, menunjukkan kesemua kandungan barangan adalah terdiri daripada *non alloy steel* di mana barangan tidak memenuhi definisi *stainless steel* dan *alloy steel* sebagaimana keterangan *Chapter Note 1(e)* dan *Chapter Note 1(f) Chapter 72* di dalam Perintah Duti Kastam 2017 iaitu :-

**Chapter Note 1(e)**

**(e) Stainless steel**

*Alloy steels containing, by weight, 1.2 % or less of carbon and 10.5 % or more of chromium, with or without other elements.*

**(f) Other alloy steel**

*Steels not complying with the definition of stainless steel and containing by weight one or more of the following elements in the proportion shown:*

- 0.3 % or more of aluminium
- 0.0008 % or more of boron
- 0.3 % or more of chromium
- 0.3 % or more of cobalt
- 0.4 % or more of copper
- 0.4 % or more of lead
- 1.65 % or more of manganese
- 0.08 % or more of molybdenum
- 0.3 % or more of nickel
- 0.06 % or more of niobium

- 0.6 % or more of silicon
- 0.05 % or more of titanium
- 0.3 % or more of tungsten (wolfram)
- 0.1 % or more of vanadium
- 0.05 % or more of zirconium
- 0.1 % or more of other elements (except sulphur, phosphorus, carbon and nitrogen), taken separately.

Barangan mendapat liputan di dalam EN HS 2012 muka surat XV-7306-1 seperti berikut :

**73.06 – Other tubes, pipes and hollow profiles (for example, open seam or welded, riveted or similarly closed), of iron or steel**

7306.30 – Other, welded, of circular cross-section, of iron or non- alloy steel

*The provisions of the Explanatory Note to heading 73.05 apply, mutatis mutandis, to the articles of this heading.*

*This heading also includes:*

- (1) *Tubes and pipes welded by forging, known as butt-welded tubes and pipes.*
- (2) *Tubes and pipes with closed edges, i.e. tubes and pipes, in which the edges touch or cover each other and which are known as open seam tubes. However, products having an open slit along the whole length are classified as sections in heading 72.16, 72.22 or 72.28.*
- (3) *Tubes and pipes in which the abutting edges are joined by clipping.*

Berdasarkan keterangan dan fakta diatas, barangan sesuai diperjeniskan di bawah kod tarif **7306.30.91 00** yang mendapat liputan secara khusus berdasarkan Perintah Duti Kastam (PDK 2017) muka surat 701 dan 702 seperti berikut :

<b>73.06</b>	<b>- Other tubes, pipes and hollow profiles (for example, open seam or welded, riveted or similarly closed), of iron or steel</b>
7306.30	- Other, welded, of circular cross-section, of iron or non-alloy steel:
	- - Boiler tubes:
7306.30.11 00	- - - With external diameter less than 12.5 mm
7306.30.19 00	- - - Other
	- - Copper-plated, fluororesin-coated or zinc Chromated steel tubes with an external diameter not exceeding 15 mm:
7306.30.21 00	- - - With external diameter less than 12.5 mm

7306.30.49 00	- - - <i>Other</i>
	- - <i>Other:</i>
<b>7306.30.91 00</b>	- - - <b><i>With an internal diameter of 12.5 mm or more, an external diameter less than 140 mm and containing by weight less than 0.45 % of carbon</i></b>
7306.30.92 00	- - - <i>With an internal diameter less than 12.5 mm</i>
7306.30.99 00	- - - <i>Other</i>