



Dagangan : 1. PIPING FABRICATED FOR BOILER PARTS
2. FITTING
3. ACCESSORIES

Kod Tarif :
SEPERTI DI LAMPIRAN

Tarikh Kelulusan : 24 September 2019

Nama Perdagangan : External Piping Fabricated For Boiler Parts

Keterangan Barangan :

1	Material buatan:	Seamless Steel				
2	<p>Spesifikasi:</p> <p>Parts of boiler yang diimport terbahagi kepada tiga pecahan seperti berikut:</p> <p>Piping Fabricated yang telah dikerjakan dengan dibentuk, diwelding "T" dan ditebuk lubang bagi pemasangan nut untuk penyambungan menjadi komponen boiler. Lihat Lampiran 1C.</p>					
	Bil	Nama barang	Material	Ukuran diameter (Lampiran 1C)	Jumlah	Gambar
	1.	Piping Fabricated (telah dibentuk, diwelding dan ditebuk sekeru dan mempunyai bentuk sambungan T).	Seamless steel tube/pipe	25mm,80mm,100 mm, 150mm, 200mm, 250mm, 300mm 350mm, 500mm 650mm Panjang tidak sama kerana telah dipotong dan diwelding	2688	
	2.	Support pipe. (telah dibentuk, diwelding dan ditebuk sekeru dan mempunyai bentuk sambungan T).	Seamless steel tube/pipe	50mm,65mm, 80mm, 100mm, 150mm, 250mm 300mm,450mm 600mm Panjang tidak sama kerana telah dipotong dan diwelding	492	

Fitting: Berdasarkan keterangan Lampiran 1C.

Bil	Nama Barang	Material	Ukuran (Lihat lampiran 1C)	Jumlah	Gambar
1	Blind Flange	Non alloy steel	100mm, 150mm, 200mm	45	
2	Flange LWN	Non alloy steel	80mm, 100mm, 150mm, 250mm, 300mm	66	
3	Flange WN	Non Alloy Steel	80mm, 100mm, 150mm, 250mm, 300mm	90	
4	TW Bos	Non Alloy Steel	65mm	30	
5	Treadolat	Non Alloy Steel	80mm, 150mm dan 200mm	72	

6	Below	Non Alloy Steel	1047mm 38mm	x	20	 <small>Weldable Neck expansion Bellows</small>
7	Tee	Non Alloy Steel	80mm, 100mm, 200mm, 350mm, 500mm		114	
8	Lateral Tee	Non alloy steel	150mm		12	
9	Treaded half coupling	Non alloy steel	80mm, 150mm, 200mm		36	
10	Red Tee	Non alloy steel	80mm,150mm, 250mm, 300mm,350m m,450mm, 500mm, 650mm		225	
11	Elbow 45LR (45 kaki)	Non alloy steel	80mm, 150mm, 250mm, 300mm, 500mm,700m m		278	

12	Elbow 90LR (90 kaki)	Non alloy steel	80mm,100mm, 150mm, 200mm,300m m, 350mm, 500mm	1103	
13	Reducer CON	Non alloy steel	100mm, 150mm, 350mm	21	
14	Reducer ECC	Non Alloy Steel	100mm, 150mm, 350mm	42	

Aksesori: Berdasarkan keterangan Lampiran 1C.

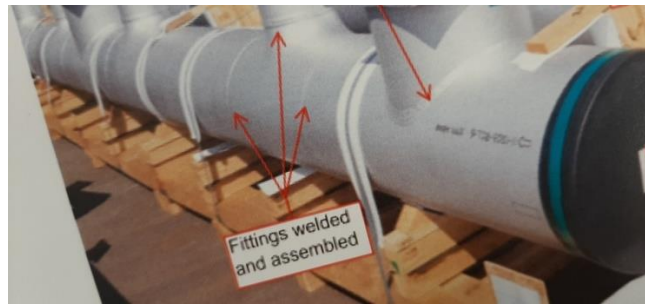
Bil	Nama Barang	Material	Ukuran Diameter	Jumlah	Gambar
1	Base plate	Non alloy steel	658.8mm x 220mm x 12mm T	45	
2	Lug plate	Non alloy steel	658.8mm x 176mm x 20mm T	278	

3	Cap plate	Non alloy steel	25mm, 150mm, 180mm, 250mm, 300mm, 500mm	81	
4	Cover plate	Non alloy steel	25mm, 150mm, 300mm, 406mm, 500mm, 558mm, 711mm	36	
5	Pad	Non alloy steel	300mm x 200mm x 20T 356mm x 225mm x 20T	9	
6	Latrolet	Non alloy steel	150mm	129	
7	Socket	Non alloy steel	80mm, 100mm, 150mm, 250mm, 300mm, 350mm, 400mm, 500mm, 650mm, 700mm	450	
8	Thermocouple pad	Non alloy steel	300mm, 650mm	24	 Bottom Side of Weld Pad Thermocouple

9	Stud Bolt	Non alloy steel	M20 x 130L, M20 x 150L M20 x 140L, M16 x 120L M16 x 140L	588	
10	Nut	Non alloy steel	M20, m24, m27	1176	
11	Radiograph plug	Non Alloy Steel	150mm, 200mm, 300mm,350m m 400mm, 500mm,700m m	258	
12	Thermowell	Non alloy steel	65mm, 250mm, 300mm, 350mm, 450mm, 500mm, 750mm,	177	

3

Gambar:



4

Kegunaan barangan:

Barangan digunakan sebagai external paiping sistem boiler bagi turbin gas.

5

Rujukan (EN dan lain-lain):

6.1. Piping Fabricated for Boiler Parts

Barangan sesuai dengan liputan di Chapter 84, Heading 84.02 di muka surat XVI-8402-3 yang menyatakan seperti berikut :

PARTS

Subject to the general provisions regarding the classification of parts (see the General Explanatory Note to Section XVI), parts of the boilers of this heading are also covered, e.g., boiler bodies and bases, internal assemblies for boilers consisting of tubes, watertube caps, headers, boiler drums, steam domes, non-mechanical fire-boxes, inspection covers and fusible plugs.

Metal tubes or pipes which have been bent or curved but not otherwise worked, presented unassembled, are not identifiable as parts of boilers and are therefore to be classified in Section VX.

Berdasarkan keterangan di atas, bagi metal tube dan pipes yang telah dibentuk tetapi masih belum dikerjakan dan didatangkan dengan tidak terpasang, maka ia tidak dianggap sebagai parts of boilers.

Walau bagaimanapun sekiranya tubes dan pipes itu telah dibentuk dan dijalankan kerja-kerja sambungan 'T' dan pembentukan seperti permohonan ini maka ia sesuai diletakkan di bawah boiler parts.

6.2. Non Alloy Steel Fitting.

Barangan sesuai dengan liputan di Chapter 73, Heading 73.07 di muka surat XV-7307-1 hingga 2 yang menyatakan seperti berikut :

This heading covers fittings of iron or steel, mainly used for connecting the bores of two tubes together, or for connecting a tube to some other apparatus, or for closing the tube aperture. This heading does not however cover articles used for installing pipes and tubes but which do not form an integral part of the bore (e.g., hangers, stays and similar supports which merely fix or support the tubes and pipes on walls, clamping or tightening bands or collars (hose clips) used for clamping flexible tubing or hose to rigid piping, taps, connecting pieces, etc.) (heading 73.15 or 73.26).

This connection is obtained:

by screwing, when using cast iron or steel threaded fittings;

or by welding, when using butt-welding or socket-welding steel fittings. In the case of butt-welding, the ends of the fittings and of the tubes are square cut or chamfered;

or by contact, when using removable steel fittings.

6.3. Non Alloy Steel Accessories

Barangan sesuai dengan liputan di Chapter 72, Heading 72.08 di muka surat XV-7208-1 hingga 2 yang menyatakan seperti berikut :

The products of this heading may have been subjected to the following surface treatments:

The heading does not, however, include flat-rolled products which have been coated, plated or clad with metal or coated with non-metallic substances such as paints, enamels or plastics (heading 72.10).

The heading also includes flat-rolled products of a shape other than rectangular or square, of any size, provided they do not assume the character of articles or products of other headings.

The heading covers, *inter alia*, "wide coils ", " sheets " and "plates " .

This heading also covers certain products named " wide flats " (some of which are called " universal plates " in some parts of the world).

6

Ketua Pengarah Kastam Malaysia memutuskan pengklasifikasian barangan di atas adalah di bawah kod tarif **seperti berikut**:

1.	Piping Fabricated for Boiler Parts	8402.90.90 00 (PDK 2017) Sebagai other parts of steam or other vapour generating boilers.
-----------	---	---

2.Fitting

Bil	Nama Barang	Kod Tarif	Sebagai
1	Blind Flange	7307.91.10 00	Other flanges of steel having an internal diameter of less than 15cm.
		7307.91.90 00	
2	Flange LWN		Other flanges of steel having an internal diameter 15cm and more.
3	Flange WN		
4	TW Bos	Ukuran < 15cm Diameter: 7307.92.10 00	Threaded elbows, bends and sleeves, having an internal diameter of less than 15cm
5	Threadolat		
6	Belows	Ukuran > 15cm Diameter: 7307.92.90 00	Threaded elbows, bends and sleeves, having an internal diameter of 15cm and more.
7	Tee	7307.93.10 00	Steel butt welding fittings having an internal diameter of less than 15cm
8	Lateral Tee		
9	Treaded half coupling	7307.93.90 00	Steel butt welding fittings having an internal diameter 15cm and more.
10	Red Tee		

11	Elbow 45LR (45 kaki)	7307.99.10 00	Other steel tube or pipe fitting having an internal diameter of less than 15cm
12	Elbow 90LR (90 kaki)		
13	Reducer CON	7307.99.90 00	Other steel tube or pipe fitting having an internal diameter of 15cm and more.
14	<i>Reducer ECC</i>		

3.Eksesori

Bil.	Nama Barang	Kod Tarif	Sebagai
1	Base Plate	Ukuran > 10mm Thickness: 7208.51.00 00	Other plate of non alloy steel, not in coils, not further worked than hot-rolled of a thickness exceeding 10mm.
2	Lug plate		
3	Cap spool plate		
4	Cover plate		
5	Pad	7326.90.99 90	Other articles of iron or steel.
6	Letrolet		
7	Socketlet		
8	Termocouple Pad		
9	Stud Bolt	7318.15.90 00	Other screw and bolt, wheather or not with their nuts or washers, exceeding 16mm and more.
10	Nut	Ukuran > 16mm diameter 7318.16.90 00	Nuts for bolts an external diameter exceeding 16mm.
11	Radiograph plug	dia > 16 mm 7318.19.90 00	Other threaded articles of iron or steel, of external diameter 16mm and more.
12	Thermowell	9025.19.20 00	Other thermometer not electrically operated.