

Dagangan : PARTS OF TOWER CRANE

Nama Perdagangan : Tower Crane Structure
Consisting of Mast Section,
Jib Section, Collar Frame &
Anchorage Frame

Kod Tarif (Perintah Duti Kastam 2012) :

8431.49.10 00 (PDK 2017)

Tarikh Kelulusan : 12 Mei 2017

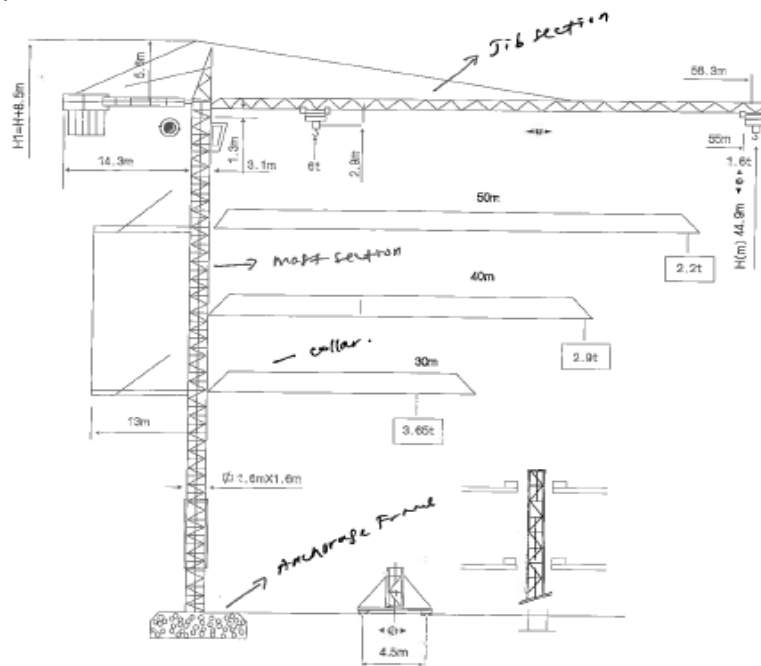
Keterangan barangan :

Barangan merupakan komponen yang diperbuat daripada *steel* yang digunakan sebagai asas untuk menyokong *Tower Crane*.

Komposisi, ukuran dan fungsi barangan yang akan diimport adalah seperti berikut :

Komponen/ Gambar	Saiz/Ukuran	Fungsi/Kegunaan	Kuantiti (Pcs)
1. Mast Section	2.0m x 2.0m x 3.0m (H)	Menambah ketinggian <i>tower crane</i>	50
2. Jib Section	10.0m x 1.25m x 1.3m	Memanjangkan jejari kerja <i>tower crane</i>	2
3. Collar Frame	2.6m x 2.3m x 0.6m	Menyambungkan <i>mast section</i> kepada struktur bangunan	10
4. Anchorage Frame	2.6m x 2.3m x 0.6m	Menyambungkan <i>mast section</i> kepada struktur bangunan	10

Kedudukan barangan dalam keseluruhan *tower crane* adalah seperti berikut :



Barangan bukan merupakan struktur bersifat kekal kerana tower crane ini akan dibuka dan dipindahkan apabila sesuatu projek pembinaan bangunan tinggi telah siap sepenuhnya.

Ketetapan:

Ketua Pengarah Kastam Malaysia memutuskan barangan ini sesuai diperjeniskan di bawah kod tarif **8431.49.10 00 (PDK2017)** sebagai **Parts of machinery of heading 84.26** berdasarkan alasan-alasan berikut:

- Barangan merupakan komponen yang diperbuat daripada *steel* yang digunakan sebagai asas untuk menyokong *Tower Crane (heading 84.26)*.
- Barangan merupakan **parts and components solely or principally use** untuk *tower crane* dan berfungsi sebagai *base and support for extension of tower crane high*. Barangan memenuhi *Section Note 2 di mukasurat XVI-4*.

SECTION XVI

**MACHINERY AND MECHANICAL APPLIANCES; ELECTRICAL EQUIPMENT;
PARTS THEREOF; SOUND RECORDERS AND REPRODUCERS, TELEVISION
IMAGE AND SOUND RECORDERS AND REPRODUCERS, AND PARTS AND
ACCESSORIES OF SUCH ARTICLES**

Notes.

(1) - (4)

GENERAL

(I) GENERAL CONTENT OF THE SECTION

.....
.....

(II) PARTS
(Section Note 2)

In general, parts which are suitable for use solely or principally with particular machines or apparatus (including those of heading 84.79 or heading 85.43), or with a group of machines or apparatus falling in the same heading, are classified in the same heading as those machines or apparatus subject, of course, to the **exclusions** mentioned in Part (I) above. Separate headings are, however, provided for :

(A) Parts of the engines of heading 84.07 or 84.08 (heading 84.09).

(B) Parts of the machinery of headings 84.25 to 84.30 (heading 84.31).

.....
.....

- Barangan bukan merupakan struktur bersifat kekal kerana tower crane ini akan dibuka dan dipindahkan apabila sesuatu projek pembinaan bangunan tinggi telah siap sepenuhnya.
- Memandangkan jabatan masih belum menerima EN HS2017 daripada WCO semasa laporan ini disediakan, maka rujukan dibuat berdasarkan EN HS2012.

- Barangan adalah sesuai diperjeniskan di bawah *heading 84.31* kerana barangan mendapat liputan EN HS 2012 muka surat XVI-8431-1 seperti berikut:

84.31- Parts suitable for use solely or principally with the machinery of headings 84.25 to 84.30.

8431.10 -Of machinery of heading 84.25

8431.20 -Of machinery of heading 84.27

- Of machinery of heading 84.28 :

8431.31 -- Of lifts, skip hoists or escalators

8431.39 -- Other

- Of machinery of heading 84.26, 84.29 or 84.30:

8431.41 -- Buckets, shovels, grabs and grips

8431.42 -- Bulldozer or angle dozer blades

8431.43 -- Parts for boring or sinking machinery of subheading 8430.41 or 8430.49

8431.49 -- Other

Subject to the general provisions regarding the classification of parts (see the General Explanatory Note to Section XVI), this heading covers parts for use solely or principally with the machinery of headings 84.25 to 84.30.

It should also be noted that many parts do not fall in this heading since they are :

- (a) Specified elsewhere in the Nomenclature, e.g., suspension springs (heading 73.20), engines (heading 84.07 or 84.08, etc.) and electrical ignition or starting equipment (heading 85.11).
- (b) Parts identical with those for motor vehicles and not suitable for use solely or principally with the machinery of headings 84.25 to 84.30, and therefore classified as parts of motor vehicles (heading 87.08); this applies in particular to wheels and steering and braking equipment.
- or (c) Parts suitable for use solely or principally with the machinery for lifting, handling, loading or unloading boules, wafers, semiconductor devices, electronic integrated circuits or flat panel displays (heading 84.86).

Berdasarkan struktur tarif Perintah Duti Kastam 2017, barangan mendapat liputan seperti berikut:

84.31	□	-
		Parts suitable for use solely or principally with the machinery of headings 84.25 to 84.30.
8431.10		- Of machinery of heading 84.25:
8431.10.13 00		- - Of electrically operated machines:
8431.10.19 00		- - - Of goods of subheading 8425.11.00, 8425.31.00 or 8425.49.10
8431.10.22 00		- - - Other
8431.10.29 00		- - Of non-electrically operated machines:
8431.20.10 00		- - - Of goods of subheading 8425.19.00, 8425.39.00, 8425.41.00, 8425.42.10 or 8425.42.90
8431.20.90 00		- - - Other
8431.31		- Of machinery of heading 84.27:
8431.31.10 00		- - Of subheading 8427.10 or 8427.20
8431.31.20 00		- - Other
8431.39		- Of machinery of heading 84.28:
		- - Of lifts, skip hoists or escalators:
		- - - Of goods of subheading 8428.10.39 or 8428.10.40
		- - - Of goods of subheading 8428.10.31 or 8428.40.00
		- - Other:

8431.39.10 00	- - - Of goods of subheading 8428.20.10, 8428.32.10, 8428.33.10 or 8428.39.10
8431.39.50 00	- - - Of automated machines for the transport, handling and storage of printed circuit boards, printed wiring boards or printed circuit assemblies
8431.39.40 00	- - - Other, of goods of subheading 8428.90
8431.39.90 00	- - - Other
8431.41	- Of machinery of heading 84.26, 84.29 or 84.30:
8431.41.10 00	- - Buckets, shovels, grabs and grips:
8431.41.90 00	- - - For machinery of heading 84.26
8431.42.00 00	- - - Other
8431.43.00 00	- - Bulldozer or angledozer blades
	- - Parts for boring or sinking machinery of subheading 8430.41 or 8430.49

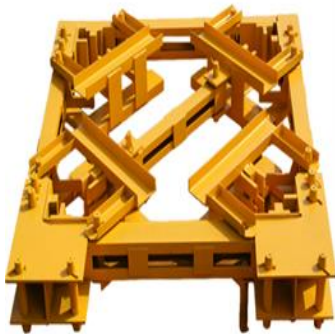
- Gambar part of tower crane yang akan diimport adalah seperti berikut :



Mast Section



Jib Section



Collar Frame



Anchorage Frame